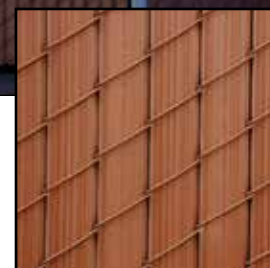


VinylWood® (3 1/2" x 5" mesh — near total privacy)

Patent Pending



VinylWood® is a durable chain link fence with wood-grained slats inserted into the chain link at our factory that look just like real wood. It is an excellent choice in fencing when you want the look and feel of wood, but not the headaches of natural wood upkeep.

It offers the lasting qualities of chain link, double-wall slats made from tough HDPE and "factory inserted" into the chain link for easy installation. There is no staining or painting required.

VinylWood® Benefits:

- Requires no painting or staining
- Little or no maintenance
- Available in 3 to 12 foot heights
- Slats manufactured from high-quality HDPE and "factory inserted" into the mesh
- Materials are much stronger and more durable than wood
- 15 year pro-rata limited warranty

Heavy-duty HDPE Slats

VinylWood® features strong and durable double wall slats "factory inserted" into the wire mesh. We've closely matched the color of the fused and bonded vinyl coating with the color of the wood grained slats to provide a beautiful finished appearance.

Vinyl Coated Chain Link Fencing

The vinyl coating on VinylWood®'s chain link mesh is created by the thermally fused and bonded method with a 9 gauge finish, 10 gauge core wire.

Galvanized Chain Link Fencing

We fabricate our chain link mesh using only the highest grade 9 or 10 gauge galvanized wire. Our state-of-the-art manufacturing process ensures a consistent weave and product quality.

ASTM Designations

Meets ASTM Designations (see chart on the next page)



Technical Data

VinyWood® Specifications	
Wind load and privacy factor - approximately (Based on wire/mesh used-stretch tension)	98%
3 1/2" x 5" Mesh	✓
Manufactured up to 12' high	✓
Available in 9 gauge galvanized before weaving (GBW) per ASTM A392 and A817, Type II, class IV wire (1.20 oz.)	✓
Available in 10 gauge galvanized before weaving (GBW) per ASTM A392 and A817, Type II, class IV wire (1.20 oz.)	✓
Available in 9 gauge galvanized before weaving (GBW) per ASTM A392 and A817, Type II, class V wire (2.0 oz.)	✓
Available in 9 gauge finish 10 gauge core fused & bonded vinyl coated wire per ASTM F668, class 2B	✓
Available in 9 gauge aluminized before weaving wire per ASTM A491, Type 1	✓
Self-locking double wall slats (with or without staples)	✓
Slats meet ASTM F3000 and F3000M designations	✓
Available in a 25' roll 5' minimum increments thereafter	✓
Fifteen year pro-rata limited warranty	✓

Standard Wire Colors

Galvanized or wood grain

Standard Slat Color

Wood grain

Please refer to actual color samples for accurate color. **Samples available upon request.**



Every VinyWood® slat is carefully crafted to replicate as closely as possible the actual grain and color of wood. A close-up view clearly shows the rich, wood grained texture.

HDPE Technical Properties

Property	Values
Melt Index	(.35) Optimum extrusion processing conditions for Fence Slats
Density	(.945) Polyethylene ranges anywhere from .914 to .960 in density
Minimum Temp.	(-70° F) Under no stress, HDPE remains flexible at this temperature
Maximum Temp.	(180° F) Under no stress, HDPE will not distort at this temperature
Strength	(4,000 psi) HDPE will not distort at lesser loads or impacts



MADE IN USA



YOUR TOTAL FENCING SOURCE

COMMERCIAL, INDUSTRIAL & RESIDENTIAL FENCE PRODUCTS AND ACCESSORIES FOR THE FENCE PROFESSIONAL!

1.800.574.1076 • www.eprivacylink.com