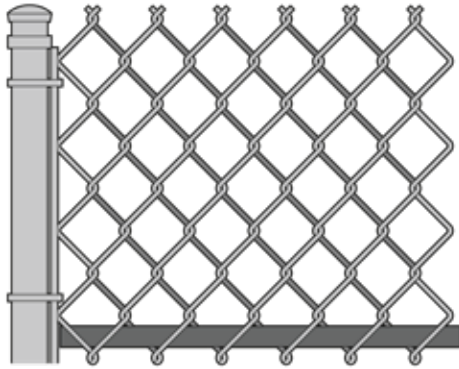
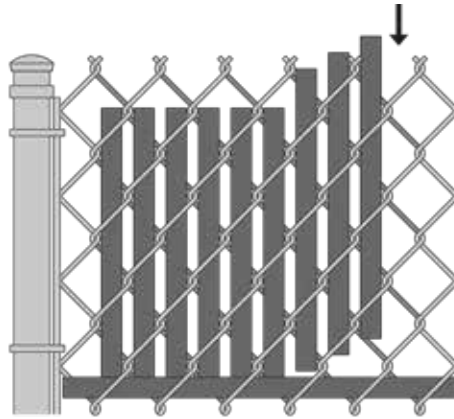


## INSTALLATION INSTRUCTIONS

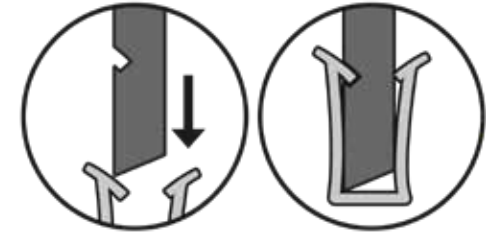
*(Suggested installation instructions. Instructions vary per job site conditions)*



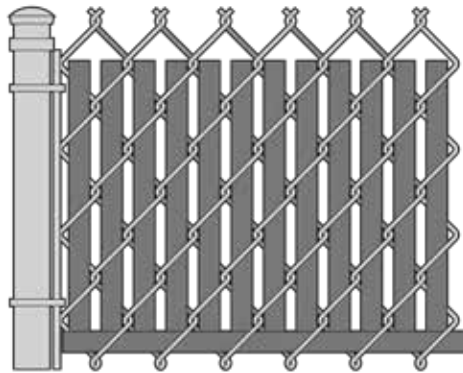
**Step 1.** Insert rail horizontally into first diamond at the bottom of the fence with open side facing up.



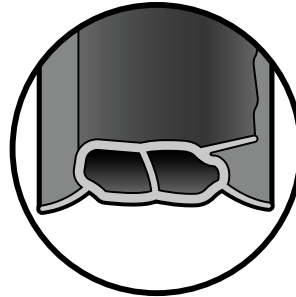
**Step 2.** Insert slats vertically with the beveled/notched end downward until slat engages and interlocks with bottom rail.



**Step 3.** Push the vertical slat into the horizontal channel until the locking catch snaps into the cutout notch.



These easy to install slats provide a beautifully finished fence.



Slat end view

SLAT NAME	SLAT WIDTH	MESH SIZE	WIRE GAUGE	COVERAGE AREA
FIN LINK	1 3/8"	2" & 2 1/4" MESH	11	10 LINEAR FEET

**FinLink® Slat Specifications**

# FinLink® Fence Slats



130 West 700 South, Smithfield, UT 84335  
 eprivacylink.com • 1-800-574-1076

PROJECT:

OWNER/GENERAL CONTRACTOR:

SUBMITTED BY:

DATE:

DRAWING NO: