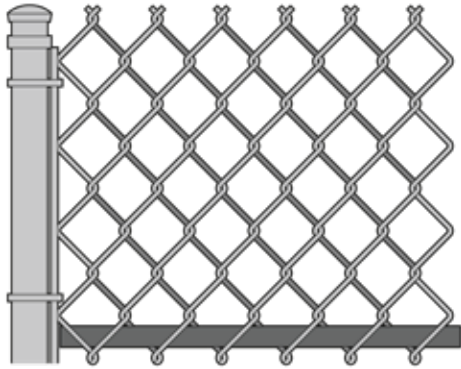
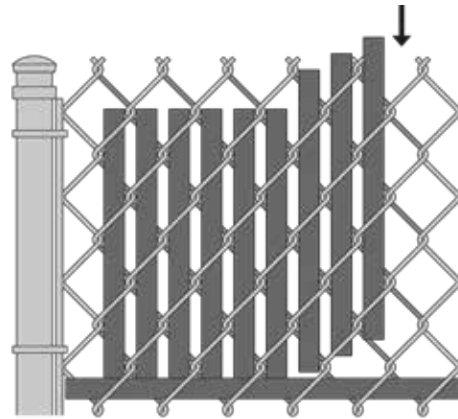


INSTALLATION INSTRUCTIONS

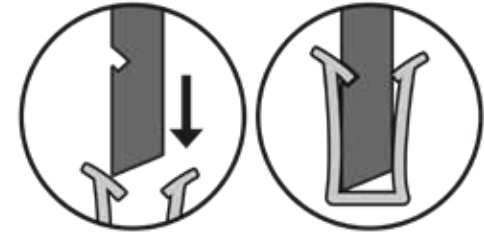
(Suggested installation instructions. Instructions vary per job site conditions)



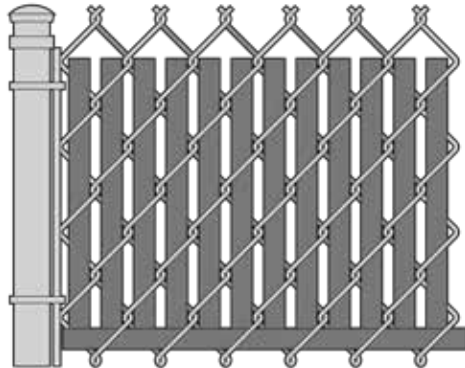
Step 1. Insert the bottom channel horizontally into the first diamond at the bottom of the fence with open side facing up.



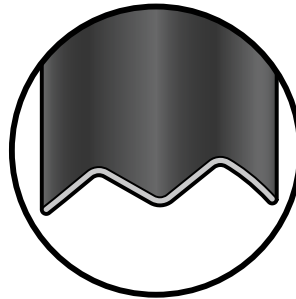
Step 2. Insert slats vertically with the beveled/notched end downward until slat engages and interlocks with the bottom channel.



Step 3. Push the vertical slat into the horizontal channel until the locking catch snaps into the cutout notch.



These simply installed slats provide a beautifully finished fence.



Slat end view

SLAT NAME	SLAT WIDTH	MESH SIZE	WIRE GAUGE	COVERAGE AREA
EZ™ SLAT	1 1/4"	2" & 2 1/4"	9, 11 OR 11 1/2	10 LINEAR FEET

EZ™ Slat Specifications

EZ™ Fence Slats



130 West 700 South, Smithfield, UT 84335
 eprivacylink.com • 1-800-574-1076

PROJECT:

OWNER/GENERAL CONTRACTOR:

SUBMITTED BY:

DATE:

DRAWING NO: